

ACCESSORIES

SHOVELS: Made from recyclable, chemical resistant polypropylene (PP) • Ideal for grit, sand & salt • Lightweight • Easy to clean • Non-stick.

J-ADR-SF03 & WIN-A607: Tough and durable • Anti-spark • Static resistant • Proven use in many climates from -95°C to +122°C.

J-PELLE/BR/CLIP: Shovel with clip for mounting to storage boxes and **SitePoint** backboard (Recommended fixing for clip: DIN 7981 3.5 x 16 stainless steel self-tapping screws, not supplied).

KIT103: Castor kit for JBS400, JBS400R, JBS500 & JBS500B storage boxes • Features rotation and swivel brake (2) for self-fitment.

KIT104: Padlock kit for JBS110, JBS200 & JBS400R • Screws included • Padlock not supplied.

SCBA1: Ready assembled universal bracket for self-contained breathing apparatus (SCBA) • Accommodates all single cylinder SCBA including carbon fiber models • 1075 carbon spring steel cradles with scratch resistant Nylon & plastic coating to hold / protect the cylinder • Suitable for SERIES 85 (max. 1 SCBA) & SERIES 90 (max. 2 SCBA) For our health & safety & fire protection ranges, see pages 36-37 and 46-47 • Fixings supplied.

JHSA1: Battery operated (9 V) electronic alarm with integral strobe for noisy environments • Sounds at 100 dB for up to 1000 m • on / off switch with indicator light • Fixings not included.

JRHB: Hand operated aluminum rotary alarm bell • Sounds at 60 dB for up to 38 yd " • Fixings not included.

KITALARM: A reed switch activated 95 dB self-contained 9 V alarm with three minute automatic reset upon activation. Alarm does not interfere with use of equipment.



J-ADR-SF03 ●
Two-part shovel.



J-PELLE/BR ●
Telescopic shovel.



J-PELLE/BR/CLIP ●
Telescopic shovel with clip.

H x W x D ("): 38 x 9 ½ x 12 ½
Weight (lbs): 2 ½
Clip: N/A

H x W x D ("): 18 ¾ / 28 x 8 x 4
Weight (lbs): ¾
Clip: x

H x W x D ("): 18 ¾ / 28 x 8 x 4
Weight (lbs): ¾
Clip: ✓



WIN-A607 ●
Scoop shovel.

H x W x D ("): 14 x 6 ½ x 9
Weight (lbs): ½
Clip: N/A

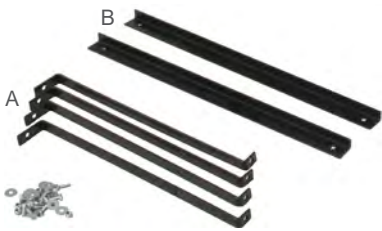


KIT103
Castor kit for storage boxes.

Height ("): 4
Weight (lbs): 2 ¾



KIT104
Padlock kit for JBS110, JBS200 & JBS400R
• Screws included • Padlock not supplied.



KIT35
Fixing kit for lockable storage box JBZ700.

H x W x D ("): 4 x 20 ½ x 1 (A)
H x W x D ("): 1 ½ x 27 x 1 (B)



KIT36
Fixing kit for lockable storage box JBZ900.

H x W x D ("): 4 x 20 ½ x 1 (A)
H x W x D ("): 1 ½ x 34 ½ x 1 (B)



SCBA1
SCBA bracket for SERIES 85 & SERIES 90.

H x W x D ("): 22 x 8 ½ x 6
Weight (lbs): 4 ½



KIT55
For mounting SERIES 65 / 75 boxes to a vehicle at an angle of 30° or 60°.



KIT56
Vertical / horizontal kit for mounting SERIES 65 / 75 boxes to a vehicle • Also suitable for some front loading boxes.



KIT65
For mounting SERIES 64 to a vehicle at an angle of 30° or 60°.



KIT80
For mounting SERIES 70 / 83 boxes to a landing leg • Suitable for 4 ¼ / 5 ¼ " wide landing legs.



KIT-LAB-FIRSTAID



KIT-LAB-ADR



KIT-LAB-FIRE



KIT-LAB-SPILLKIT



KIT-LAB-BA



KIT-LAB-HOSEREEL



KIT-LAB-FOAM-CO2



KIT-LAB-FOAM-CO2

LABELS
10 labels per kit.

LABELS
1 x CO₂ & 1 x Foam.



JPFB1 ●

Plastic fire bucket without lid.

H x W x D ("): 10 ½ x 10 ¾ x 8 ½
Weight (lbs): 1 ½
Capacity (US gal): 2 ½



JPBL1 ●

Plastic lid for JPFB1.

H x W x D ("): 1 ¾ x 11 ¼ x 10 ½
Weight (lbs): ¼



JHSA1 ●

Electric alarm.

H x W x D ("): 10 ¼ x 6 ¼ x 2 ¾
Weight (lbs): 1 ½



JRHB ●

Rotary alarm bell.

H x W x D ("): 9 ¾ x 9 ½ x 5 ¼
Weight (lbs): 3 ¾



KITALARM



KIT50

Rubber strap.



KIT51

Buckle web strap.



KIT108

Adjustable strap for CO₂ extinguishers, suitable for JFP9 & JFP10 fire extinguisher stands.



KIT52

Free standing feet for Jonesco front loading health & safety and fire protection boxes.



KIT81

Spare break-glass kit for Jonesco front loading health & safety and fire protection boxes • 2 keys, 2 clear plates, 2 fasteners & 1 fire label.



KIT81A

Spare break-glass kit for Jonesco SERIES 90 health & safety and fire protection boxes • 2 keys, 2 clear plates, 2 fasteners, 1 fire label & 1 hose reel label.



KIT91

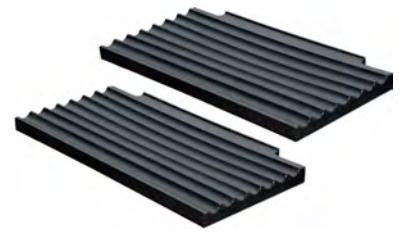
Spare break-glass key for Jonesco front loading health & safety and fire protection boxes • 10 pieces.



KITSHELF72

2 plastic shelves for SERIES 72.

H x W x D ("): 1 ½ x 21 x 7 ½
Weight (lbs): 2 ¼ (2)



KITSHELF85

2 plastic shelves for SERIES 85.

H x W x D ("): 1 ½ x 21 x 9 ¾
Weight (lbs): 2 ½ (2)



KIT-TOGGLE

Spare plastic toggle kit Jonesco health & safety and fire protection boxes • 2 plastic toggles, 4 hinge pins, 2 lynch pins.



KIT57

2 wooden shelves for SERIES 85.

H x W x D ("): ¼ x 20 ½ x 10 ¼
Weight (lbs): 1 ¼ (2)



KIT90

2 wooden shelves for SERIES 90.

H x W x D ("): ¼ x 34 ½ x 12 ¾
Weight (lbs): 3 ¼ (2)